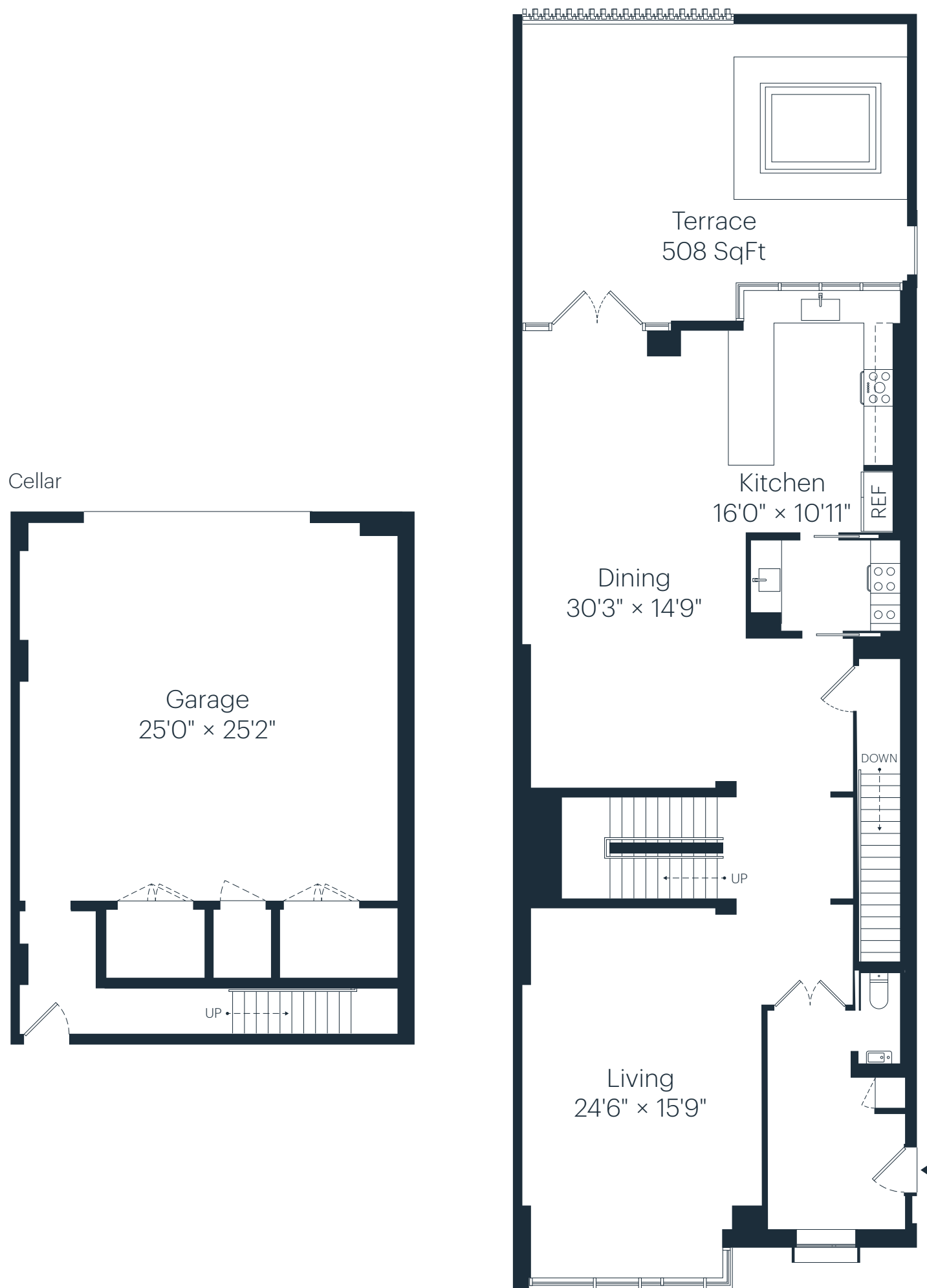


Level 1 — Townhouse
Unit TH5
Lower

4 Bedrooms
4.5 Bathrooms
Upper Floor 1,720 Sq Ft / 159 Sq M
Lower Floor 1,659 Sq Ft / 154 Sq M
Total 3,379 Sq Ft / 313 Sq M
Cellar 928 Sq Ft / 86 Sq M



Lower Level



OOSTEN WILLIAMSBURG

THE RESERVE

CONTACT
Email info@theoosten.com
Telephone 929 436 0620
www.theoosten.com

SALES GALLERY
Townhouse One
429 Kent Avenue
Williamsburg NY 11249

Exclusive Sales & Marketing by the Silk Realty Group.

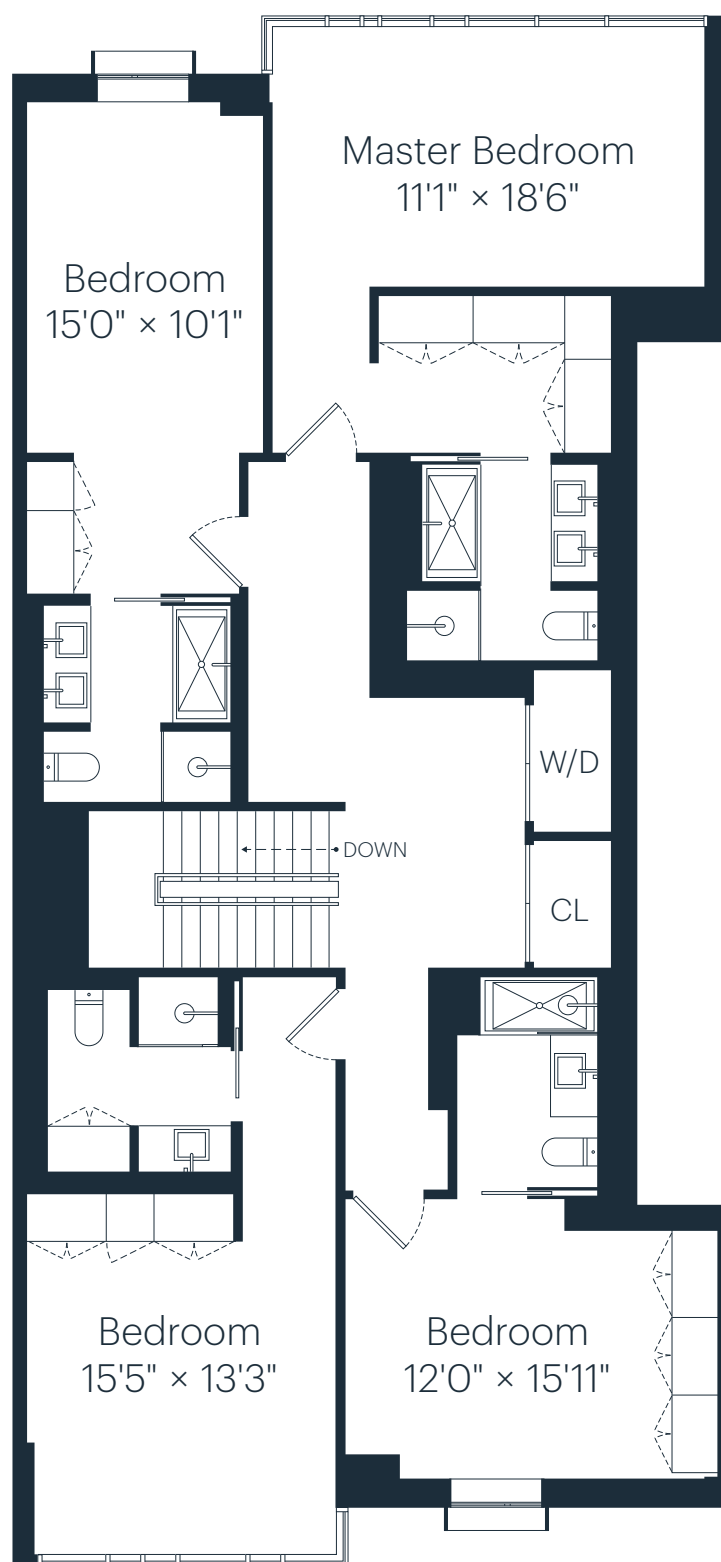
All dimensions are approximate and subject to normal construction variances and tolerances. Square footage exceeds the usable floor area. Sponsor reserves the right to make changes in accordance with the terms of the offering plan. Plans and dimensions may contain minor variations from floor to floor. This is not an offering. The complete offering terms are in an offering plan available from sponsor, File No. CD-13-0264. Sponsor: 421 Kent Development LLC, 150 East 52nd Street, Suite 6002, New York, New York 10022. Property: 429 Kent Avenue, Brooklyn, New York 11249

Level 1 — Townhouse
Unit TH5
Upper

4 Bedrooms
4.5 Bathrooms
Upper Floor 1,720 Sq Ft / 159 Sq M
Lower Floor 1,659 Sq Ft / 154 Sq M
Total 3,379 Sq Ft / 313 Sq M
Cellar 928 Sq Ft / 86 Sq M



Upper Level



OOSTEN WILLIAMSBURG

THE RESERVE

CONTACT
Email info@theoosten.com
Telephone 929 436 0620
www.theoosten.com

SALES GALLERY
Townhouse One
429 Kent Avenue
Williamsburg NY 11249

Exclusive Sales & Marketing by the Silk Realty Group.

All dimensions are approximate and subject to normal construction variances and tolerances. Square footage exceeds the usable floor area. Sponsor reserves the right to make changes in accordance with the terms of the offering plan. Plans and dimensions may contain minor variations from floor to floor. This is not an offering. The complete offering terms are in an offering plan available from sponsor, File No. CD-13-0264. Sponsor: 421 Kent Development LLC, 150 East 52nd Street, Suite 6002, New York, New York 10022. Property: 429 Kent Avenue, Brooklyn, New York 11249