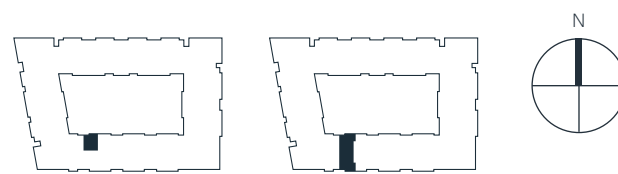
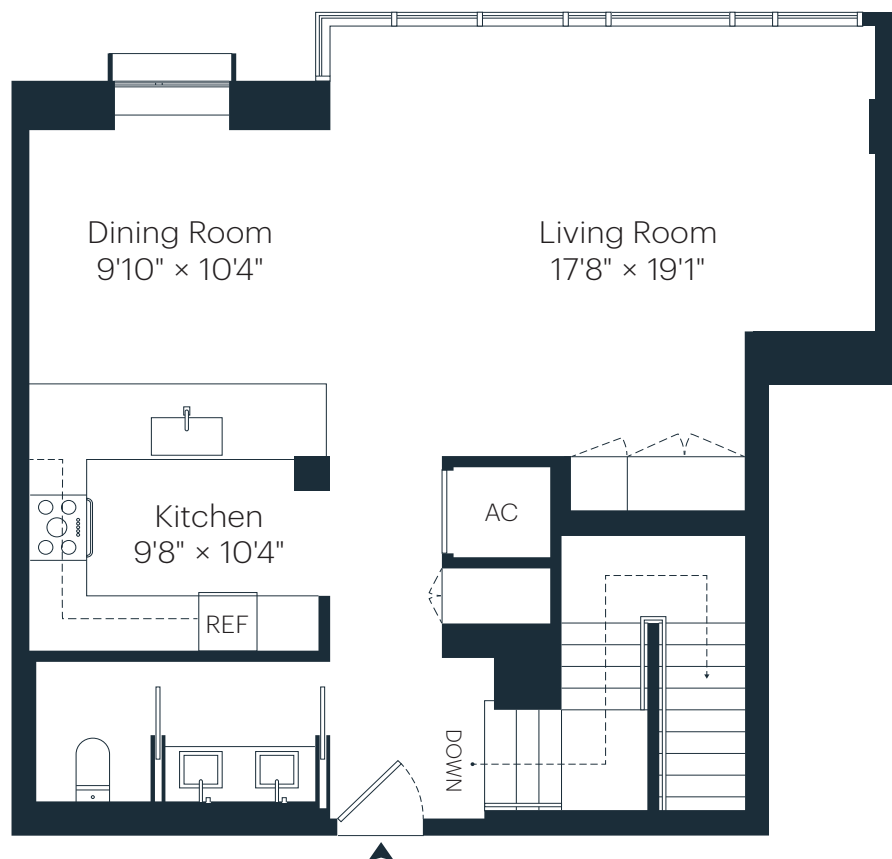


Level 7 — Duplex  
Unit D725

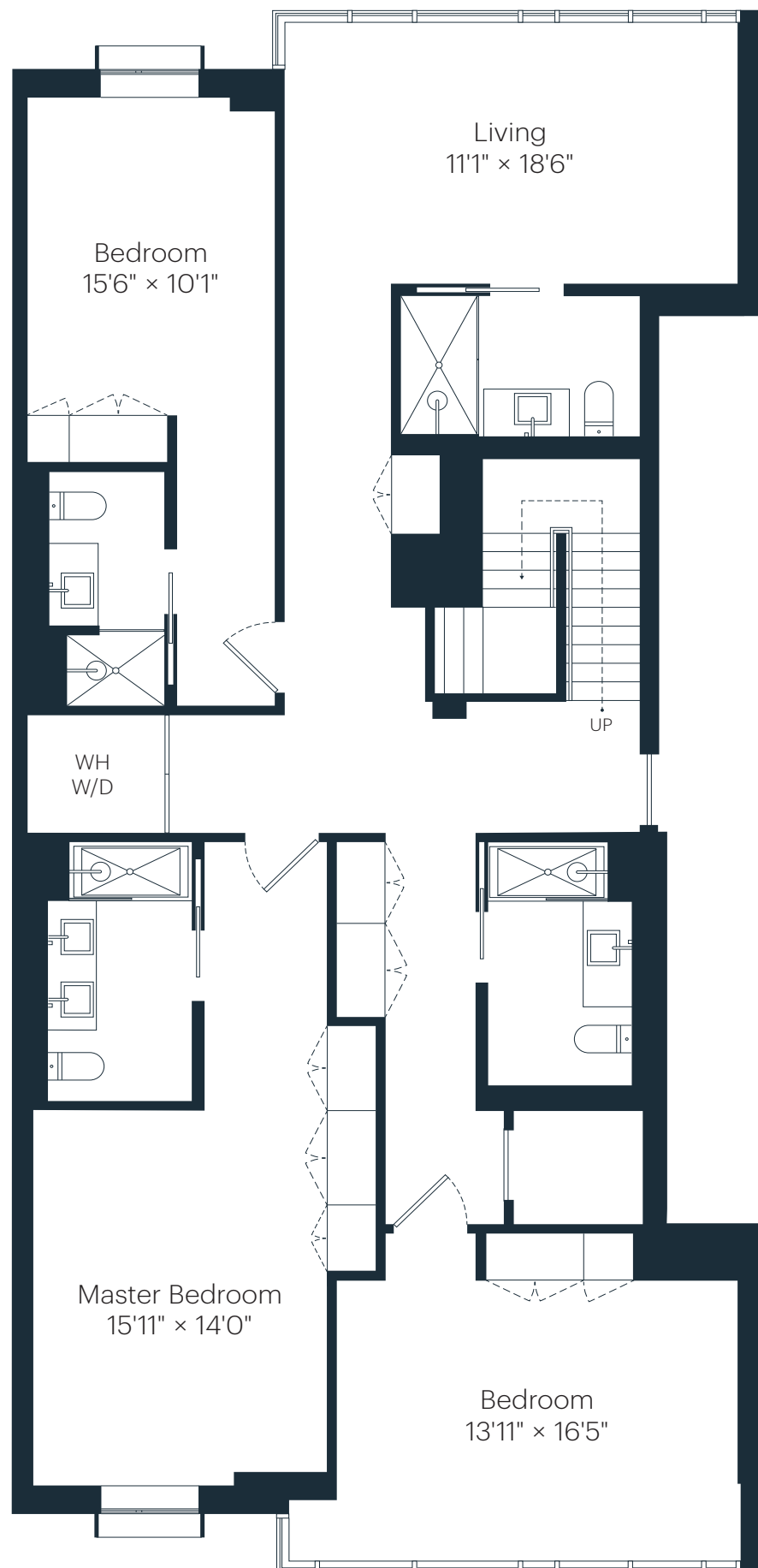
3 Bedrooms  
4.5 Bathrooms  
Lower Floor 814 Sq Ft / 75 Sq M  
Upper Floor 1,743 Sq Ft / 161 Sq M  
Total 2,557 Sq Ft / 236 Sq M



Lower Level



Upper Level



OOSTEN WILLIAMSBURG

THE RESERVE

CONTACT

Email [info@theoosten.com](mailto:info@theoosten.com)  
Telephone 929 436 0620  
[www.theoosten.com](http://www.theoosten.com)

SALES GALLERY

Townhouse One  
429 Kent Avenue  
Williamsburg NY 11249

Exclusive Sales & Marketing by the Silk Realty Group.

All dimensions are approximate and subject to normal construction variances and tolerances. Square footage exceeds the usable floor area. Sponsor reserves the right to make changes in accordance with the terms of the offering plan. Plans and dimensions may contain minor variations from floor to floor. This is not an offering. The complete offering terms are in an offering plan available from sponsor, File No. CD-13-0264. Sponsor: 421 Kent Development LLC, 150 East 52nd Street, Suite 6002, New York, New York 10022. Property: 429 Kent Avenue, Brooklyn, New York 11249